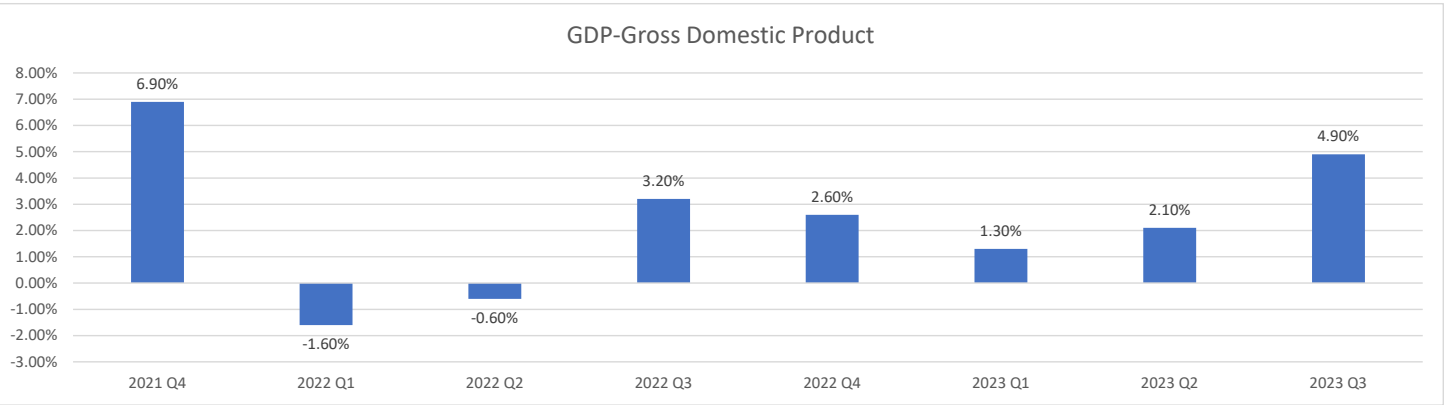


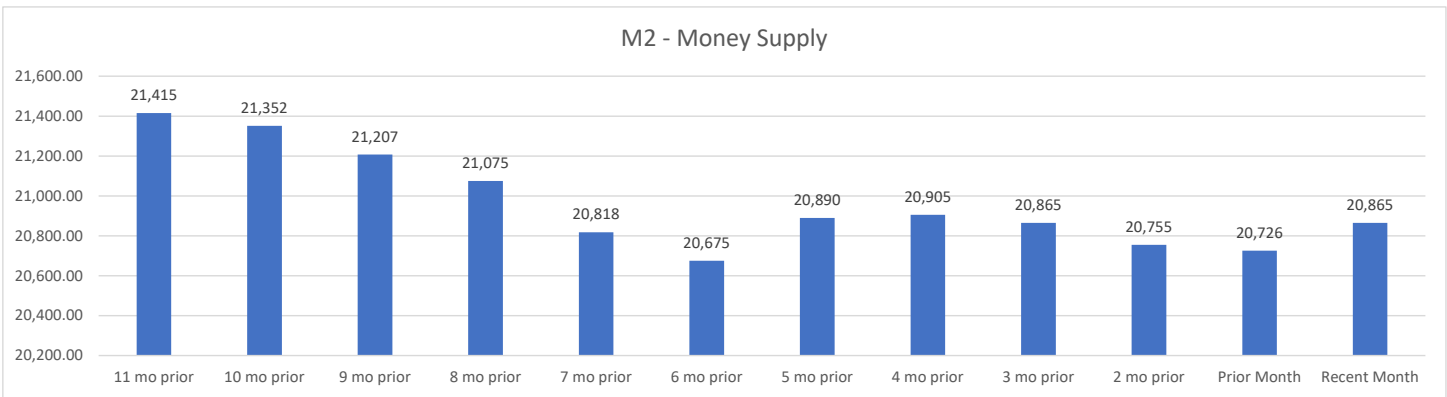
Economic Indicators

These economic indicators are gathered from public sources and are as current as the release of the underlying data. The most recent month indicates the most recent data available and additional trailing 12 months data is included where applicable.

These charts are updated monthly.



Source: www.bea.gov



(billion \$) Seasonally Adjusted

Source: www.federalreserve.gov/releases/h6

Velocity of M2 Money Stock

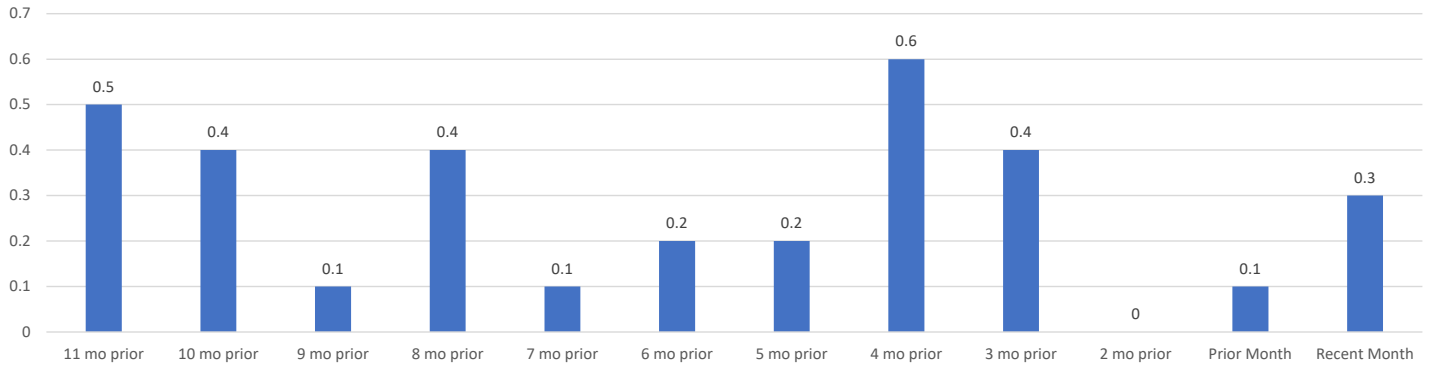


Calculated as the ratio of quarterly nominal GDP to the quarterly average of M2 money stock

Source: <https://fred.stlouisfed.org/series/M2V>

Previous 5 years from most recent quarter

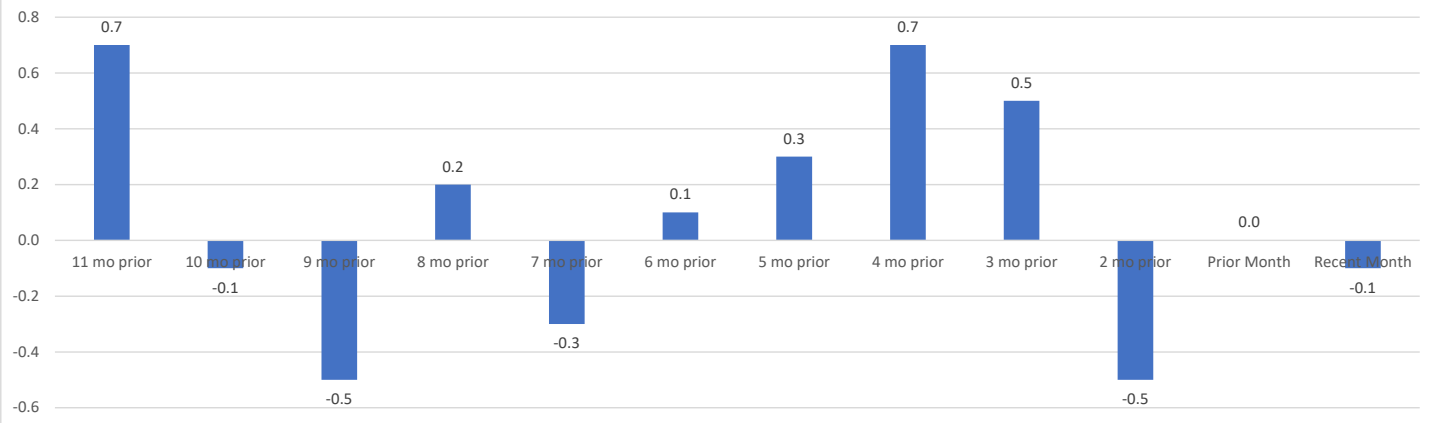
CPI - Consumer Price Index



% change from previous month-all items

Source: www.bls.gov/cpi/

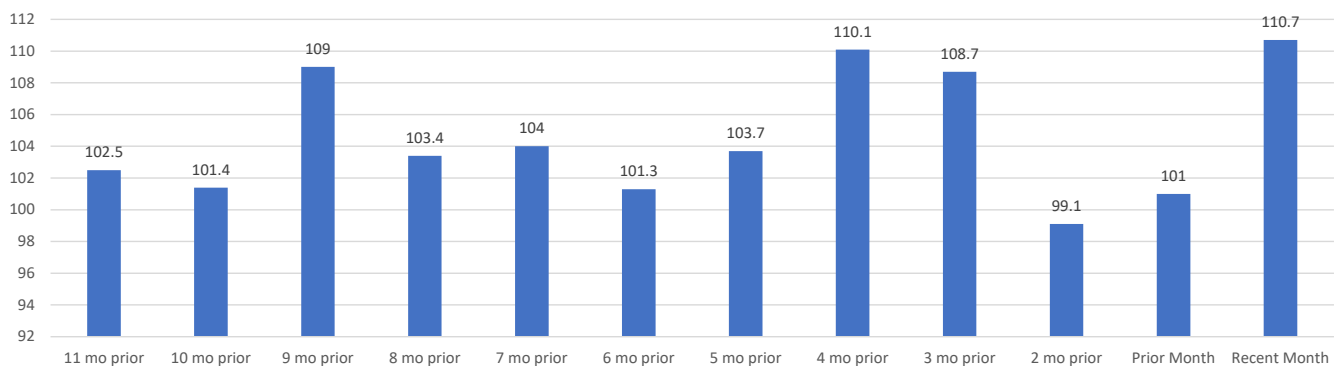
PPI - Producer Price Index



% change from previous month - total final demand

Source: www.bls.gov/ppi/

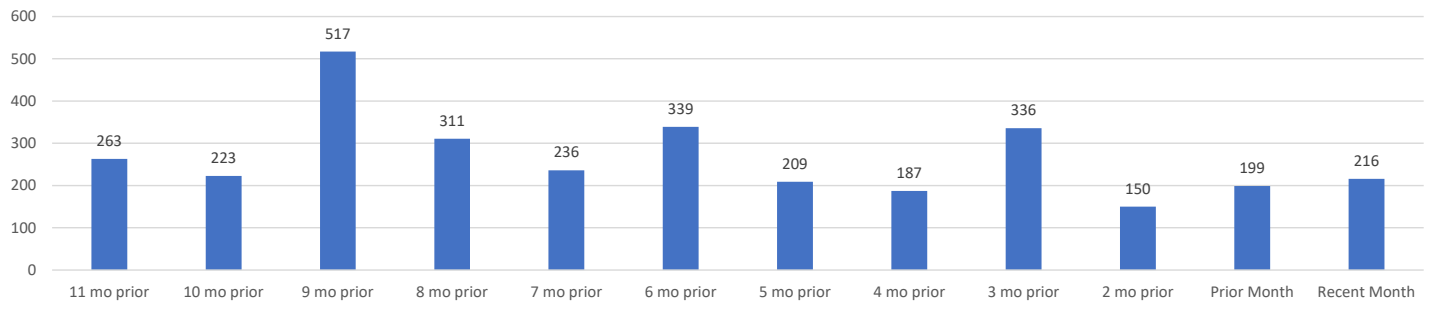
Consumer Confidence Index



Index 1985=100

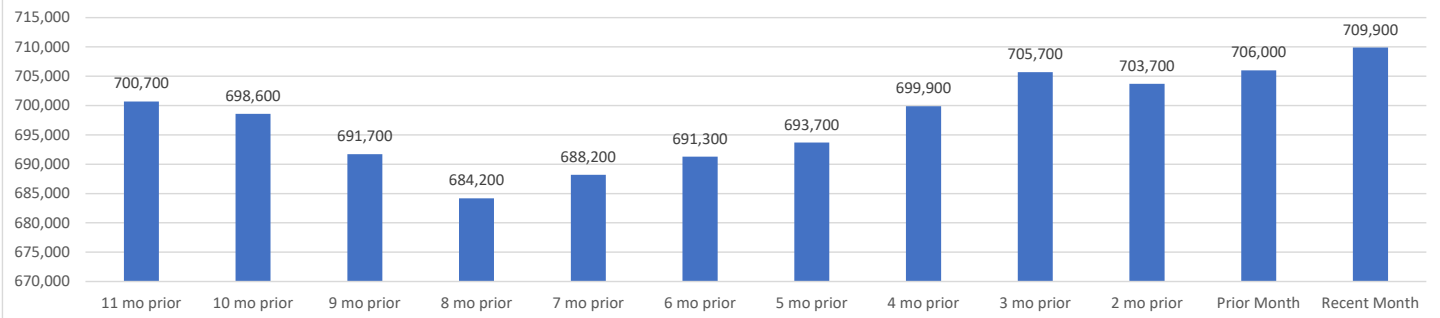
Source: <https://conference-board.org/data/consumerconfidence.cfm>

CES - Current Employment Statistics



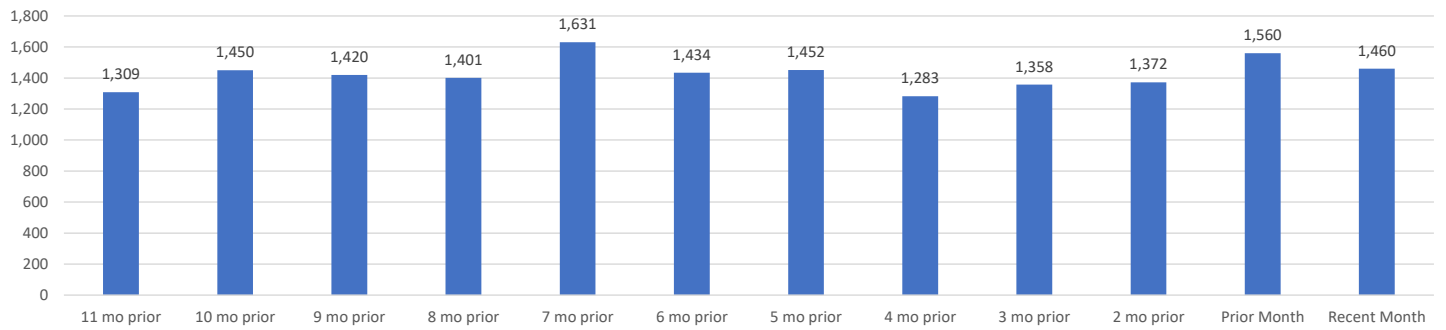
Source: www.bls.gov/ces/

Advance Sales for Retail and Food Services



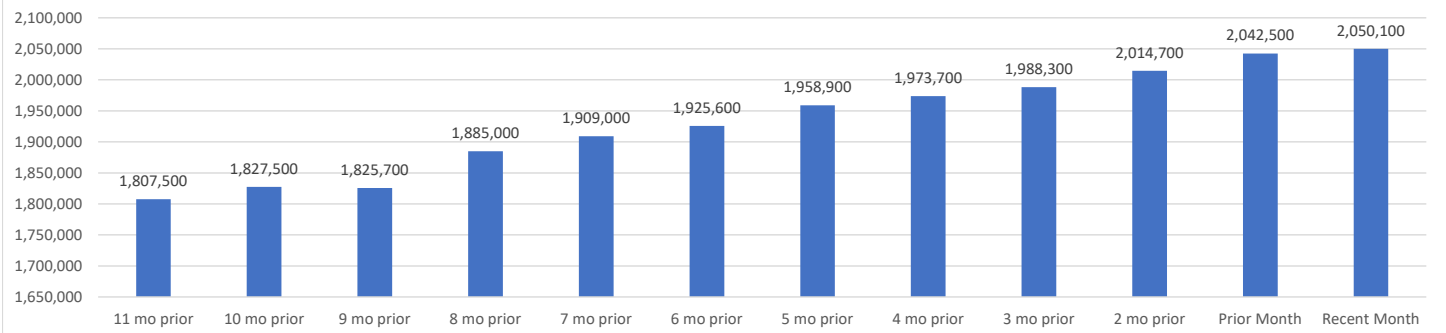
(million \$) Total
Source: <https://www.census.gov/retail/index.html>

Housing Starts

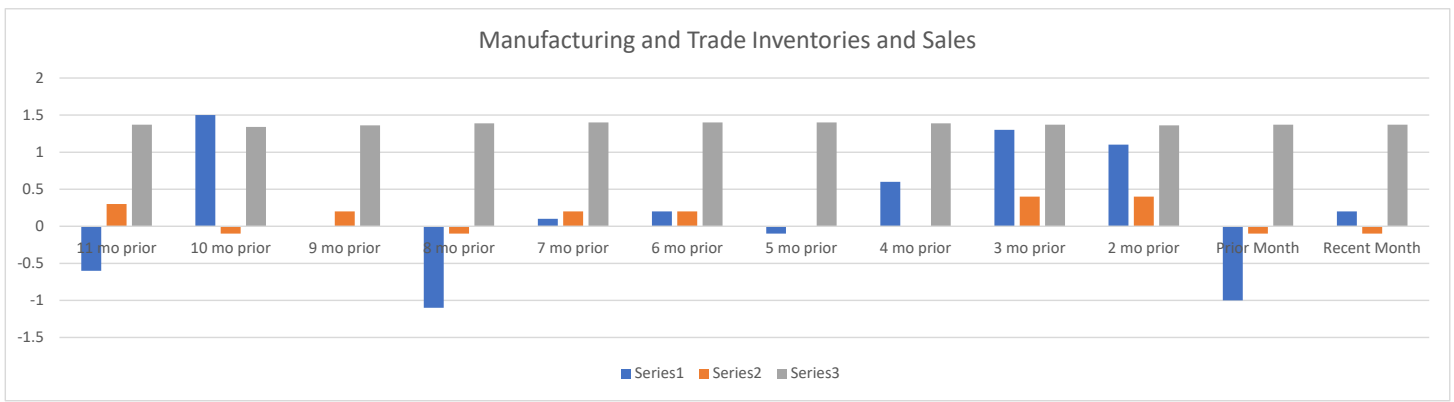


Source: <https://www.census.gov/construction/nrc/pdf/newresconst.pdf>

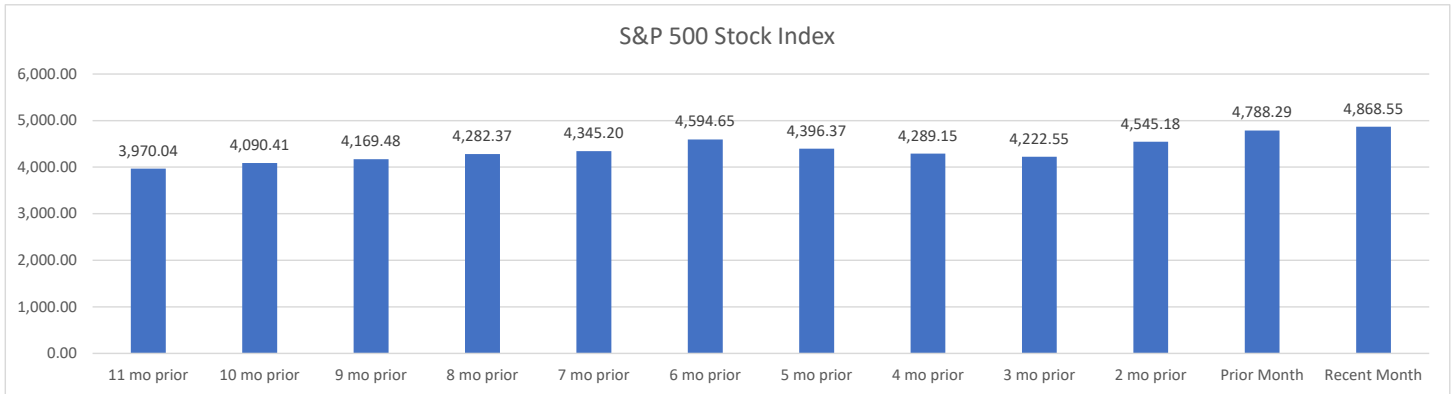
Construction Spending



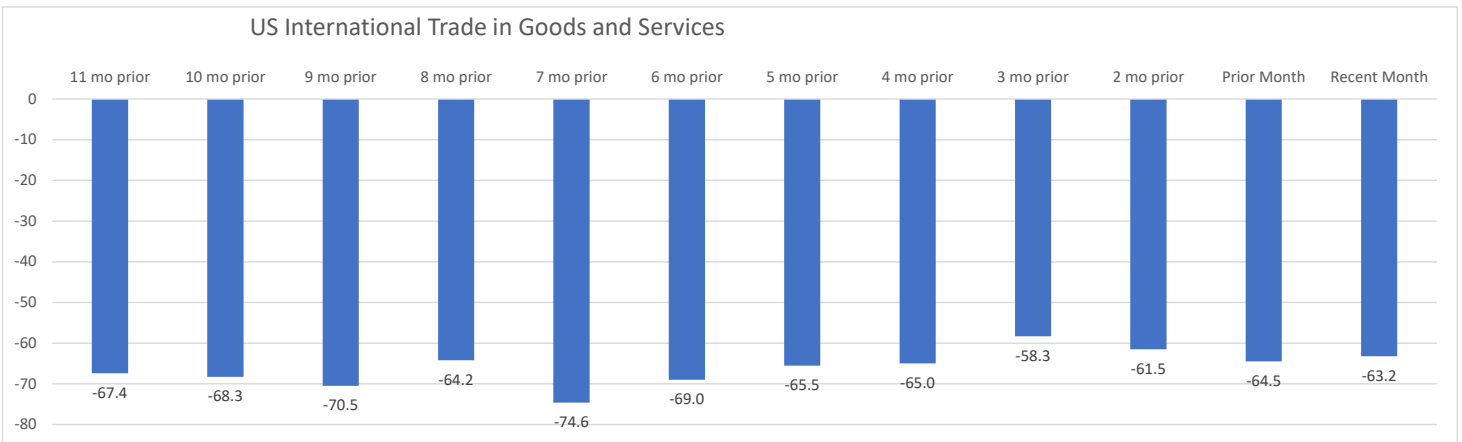
Source: <https://www.census.gov/construction/c30/c30index.html>



Series 1 = Sales Series 2 = Inventories Series 3 = Inventory/Sales Ratio
 Source: <https://www.census.gov/mtis/index.html>



Source: <https://finance.yahoo.com/quote/%5EGSPC/history?p=%5EGSPC>



Source: www.bea.gov

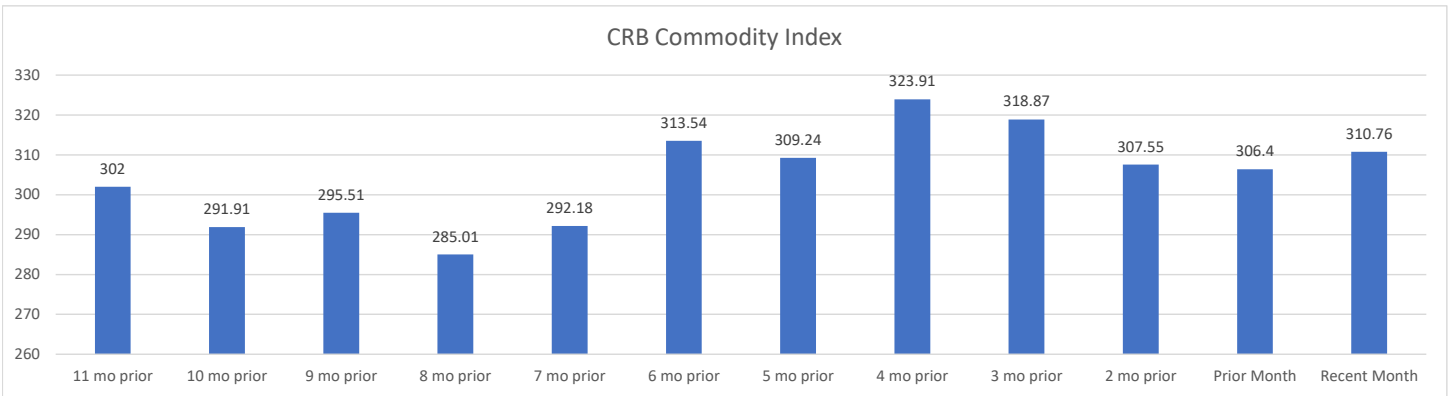
Employment Cost Index Manufacturing (Total Compensation not seasonally adjusted)

	Indexes December 2005 = 100			%Changes for					
				3 months ended			12 months ended		
	Sep-22	Jun-23	Sep-23	Sep-22	Jun-23	Sep-23	Sep-22	Jun-23	Sep-23
Manufacturing	149.1	153.7	154.6	0.7	0.9	0.6	4.6	3.9	3.7
Management, professional, and related	144.7	148.9	149.5	0.1	0.9	0.4	3.5	3	3.3
Sales and office occupations	153.2	158.5	159.4	1.4	1.1	0.6	5.7	4.9	4
Natural resources, construction, and maintenance	148.5	153.4	154.4	0.7	1	0.7	3.6	4	4
Production, transportation, and material moving	151.7	156.5	157.4	1.2	1	0.6	5.5	4.4	3.8

Source: <https://www.bls.gov/news.release/eci.t05.htm>

CRB Commodity Index (Index Points)

Thomson Reuters/CoreCommodity CRB Index is calculated using arithmetic average of commodity futures prices with monthly rebalancing. The index consists of 19 commodities: Aluminum, Cocoa, Coffee, Copper, Corn, Cotton, Crude Oil, Gold, Heating Oil, Lean Hogs, Live Cattle, Natural Gas, Nickel, Orange Juice, RBOB Gasoline, Silver, Soybeans, Sugar and Wheat. Those commodities are sorted into 4 groups, with different weightings: Energy: 39%, Agriculture: 41%, Precious Metals: 7%, Base/Industrial Metals: 13%.



Source: <https://tradingeconomics.com/commodity/crb>

US Dollar Exchange Rates Table

Jan 25, 2024 12:22 UTC

US Dollar	1.00 USD	inv. 1.00 USD	
Euro	0.918267	1.089007	EUR
British Pound	0.785681	1.272781	GBP
Indian Rupee	83.11739	0.012031	INR
Australian Dollar	1.518405	0.658586	AUD
Canadian Dollar	1.351264	0.740048	CAD
Singapore Dollar	1.339994	0.746272	SGD
Swiss Franc	0.864953	1.156133	CHF
Malaysian Ringgit	4.729166	0.211454	MYR
Japanese Yen	147.6384	0.006773	JPY
Chinese Yuan Renminbi	7.143575	0.139986	CNY
Mexican Peso	17.24814	0.057977	MXN
Russian Ruble	89.913475	0.011122	RUB
Hong Kong Dollar	7.816934	0.127927	HKD
Brazilian Real	4.932118	0.202753	BRL

Country	1/25/2024	12/28/2023	11/28/2023	#####
US	1	1	1	1
EUR	0.918267	0.902821	0.911198	0.944964
GBP	0.785681	0.784867	0.790003	0.823477
INR	83.11739	83.180154	83.334974	83.118447
AUD	1.518405	1.460384	1.508958	1.579078
CAD	1.351264	1.319859	1.358443	1.378174
SGD	1.339994	1.318521	1.333997	1.369972
CHF	0.864953	0.838607	0.878686	0.89528
MYR	4.729166	4.60741	4.671284	4.779686
JPY	147.638386	141.099643	148.293518	149.92955
CNY	7.143575	7.107314	7.117585	7.316443
MXN	17.24814	16.891924	17.153744	18.330412
RUB	89.913475	89.79539	89.177727	93.333706
HKD	7.816934	7.814963	7.796936	7.821793
BRL	4.932118	4.838646	4.874854	5.001351

